

Publish Date : 28.03.2019 | Rev no: 01

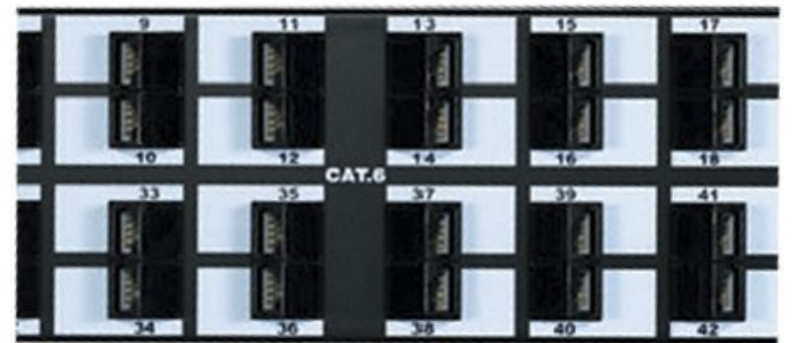
PowerMAX 2U 48P Cat.6 UTP 45 degree Panel

The DINTEK PowerMAX Connectivity solution is comprised of a system of patch panels, work area outlets, and patch cords to enable users to specify the highest level of channel performance available.

Our Category 6 patch panels are designed to exceed ANSI/TIA-568-C.2 performance specifications and are backward compatible with lower level cabling products.

DINTEK Category 6 panels support both T568A and T568B wiring schemes and can be terminated with an industry standard 110 or Krone installation tool. Panels include a mounting slot for the DINTEK cable management bar, which easily mounts to the back of the panel, for improved routing and strain relief functionality.

Combined with other DINTEK PowerMAX Products, they are the perfect solution to your voice and data communications needs.



Features

- Component Level Design
- Meet & exceeds all current Cat6 Standards
- Stripped window label for easy management
- 110 and krone dual type IDC termination
- 19" 24 port patch panel, 1U size & 48 port panel, 2U size.
- Accept 22~26AWG, stranded or solid wire
- Optional rear cable management



Applications

- Voice; T1; ISDN
- 10BASE-T (IEEE 802.3)
- 16Mbps Token Ring (IEEE802.5)
- 100VG-AnyLAN (IEEE802.12)
- 100BASE-T Ethernet (IEEE802.3)
- 155/622Mbps 1.2/2.4 Gbps ATM
- 1000Mbps Gigabit Ethernet
- 550MHz Broadband Video

Standards Conformance

- ETL Verified
- ISO/IEC11801 2nd edition
- ANSI/TIA Standard 568-2.D
- CENELEC EN 50173

Ordering Information

Product Number	Product Name	Packing
1401-04003	Cat.6 48 Port UTP 45 degree Panel - Component Level	1 pcs/box - 10 boxes/carton
1401-04004	Cat.6 24 Port UTP 45 degree Panel - Component Level	1 pcs/box - 25 boxes/carton

Technical Specifications

Construction

Frame

Material	Cold Rolled Steel
Type	Plate: SPCC-SD 16G

Connectors

Contact Type	Spring wire / contact blades
Material	Phosphor Bronze Alloy Plated with 50 micro-inch of Gold over 70~100 micro-inch of Nickel

Rear Terminals

Terminal Type	Dual IDC (110/Krone)
Material	Phosphor Bronze Alloy with 100 micro-inch 100% Sn Alloy

Physical Ranges

Temperature Range

Storage	-40 to +70°C
Operational	-10 to +60°C

Relative humidity

Operational	Max. non-condensing 93%
--------------------	-------------------------

Retention

50N (11lbf) for 60s+-5s min between the jack and plug

Insertion/Extraction life

750 cycles minimum

Number of IDC terminations

200 minimum

Total mating Force

800gms for a 8 wire leads minimum

Electrical

Insulation Resistance between conductors 500 Meg Ω min.@ 100V d.c

Dielectric Withstanding Voltage 1000V, RMS, 60HZ, 1 MIN.

Spring Wire Contact Resistance 20 m Ω Max.

Voltage/Current Rating 1.5 AMPS at 20°C

IDC Contact Resistance 2.5 m Ω Max

DINTEK Electronic Limited

5F., No.8, Ln. 97, Wugong Rd.
Xinzhuang Dist., New Taipei City 242
Taiwan (R.O.C.)

P: Office: +886-2-22997898 **E-mail:** sales@dintek.com.tw **W:** www.dintek.com.tw

1401-04003