

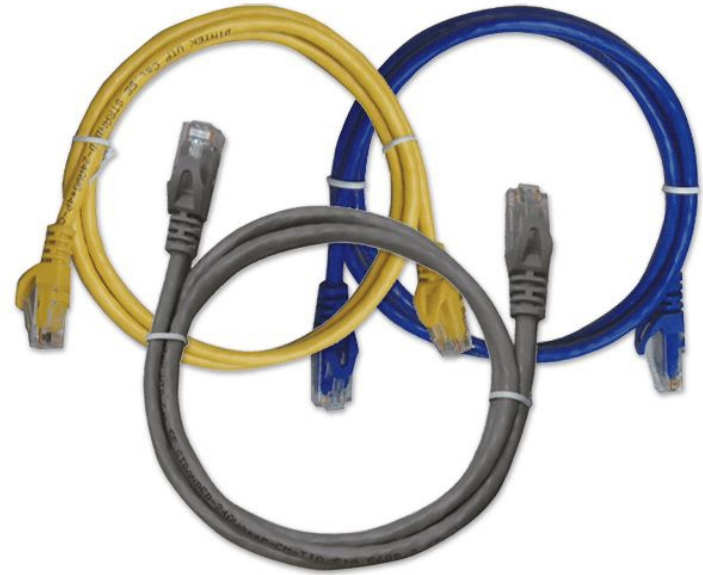
Publish Date : 28.07.2019 | Rev no: 01

## PowerMAX 3mtr Cat.6 U/UTP Patch Cord - LSZH

DINTEK PowerMAX™ Category 6 LSZH Patch Cords are specifically designed to support high speed data networks for Gigabit applications, and are fully tested to meet ANSI/TIA Category 6 channel requirements.

The patch cables are made from high quality shielded four pair 24AWG stranded wire.

DINTEK PowerMAX™ Cat.6 LSZH Patch Cords are pre-terminated with RJ45 plugs and feature anti-snap strain relief boots. DINTEK recommends the entire range of PowerMAX™ UTP products be used in a end-to-end system to maximize cabling performance.

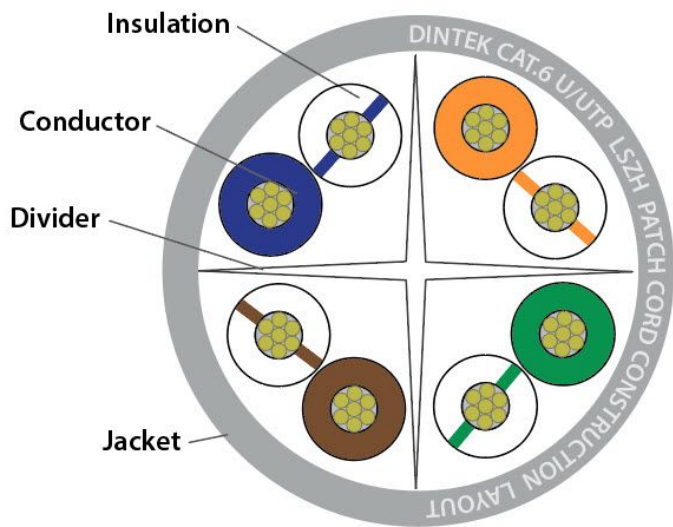


### Applications

- Patch panel to patch panel connections
- PC to information outlet connections
- Information outlet to telecommunications closet connections
- Equipment & DTE connections Voice; T1; ISDN
- 10BASE-T (IEEE 802.3)
- 16Mbps Token Ring (IEEE802.5)
- 100VG-AnyLAN (IEEE802.12)
- 100BASE-T Ethernet (IEEE802.3)
- 155/622Mbps 1.2/2.4 Gbps ATM
- 1000Mbps Gigabit Ethernet
- 550MHz Broadband Video

### Features

- Molded boots prevent pin from bending and cables from kinking
- 24AWG stranded wire provides maximum flexibility
- Brilliant colors make management a snap
- Fully tested to meet ANSI/TIA-568-2.D category 6 requirement
- The various colors are available to meet TIA/EIA-606 standards
- The mechanical characteristics and transmission performance meet 16Mbps token Ring, 10Base-T, 100Base-T, 155Mbps, 622Mbps ATM, Gigabit-Ethernet and 1.2Gbps ATM requirements.



### Standards Conformance

- ETL verified to ANSI/TIA-568-2.D specifications
- ISO/IEC11801 2nd edition
- ANSI/TIA-568-C.2
- CENELEC EN 50173
- LSZH Flame test as per IEC 60332-1
- RoHS-6 Compliant

### Ordering Information

| Product Number | Product Name           | Jacket Type | Color  | Length Qty |
|----------------|------------------------|-------------|--------|------------|
| 1201-04483     | Cat.6 U/UTP Patch Cord | LSZH        | Gray   | 3 m        |
| 1201-04484     | Cat.6 U/UTP Patch Cord | LSZH        | Blue   | 3 m        |
| 1201-04485     | Cat.6 U/UTP Patch Cord | LSZH        | Red    | 3 m        |
| 1201-04486     | Cat.6 U/UTP Patch Cord | LSZH        | Yellow | 3 m        |
| 1201-04487     | Cat.6 U/UTP Patch Cord | LSZH        | Green  | 3 m        |
|                |                        |             |        |            |
|                |                        |             |        |            |
|                |                        |             |        |            |

## Technical Specifications

| Cable Construction                   |                                                                               |
|--------------------------------------|-------------------------------------------------------------------------------|
| <b>Conductor</b>                     |                                                                               |
| Material                             | Bare Copper                                                                   |
| Wire Size                            | 24AWG                                                                         |
| <b>Insulation</b>                    |                                                                               |
| Material                             | HDPE                                                                          |
| Thickness                            | 0.2mm                                                                         |
| Diameter                             | 1.0±0.05mm                                                                    |
| Colors                               | Blue/White-Blue   Orange/White-Orange   Green/White-Green   Brown/White-Brown |
| <b>Jacket</b>                        |                                                                               |
| Material                             | LSZH, flame retardant CM grade                                                |
| Thickness                            | Nom. 0.66 - 0.70mm                                                            |
| Diameter                             | 5.6 ±0.2mm                                                                    |
| Color                                | Gray   Blue   Yellow   Red   Green   Orange   Black   Violet                  |
| Maximum Tensile Strength             | 1.05 kgf/mm <sup>2</sup>                                                      |
| <b>RJ45 Plug</b>                     |                                                                               |
| Plug Type                            | Un-shielded RJ45 plug   Housing>polycarbonate                                 |
| Contact Material                     | Copper alloy 50u" gold plated over nickel                                     |
| Strength                             | 20lbs. min                                                                    |
| Durability                           | 750 cycles min.                                                               |
| Wiring schemes                       | T568B (Standard) - T568A on request                                           |
| <b>Electrical</b>                    |                                                                               |
| Impedance                            | 93.8Ω ± 15 Ω                                                                  |
| Capacitance unbalance pair to ground | 330pf/100m Max                                                                |
| D.C.R (Max.)                         | 14.8 ohm/100m at 20°C                                                         |
| DC Insulation Resistance             | 500MΩ/100m min.                                                               |
| Resistance unbalance                 | 3% MAX./100m                                                                  |

### DINTEK Electronic Limited

5F., No.8, Ln. 97, Wugong Rd.  
Xinzhuang Dist., New Taipei City 242  
Taiwan (R.O.C.)

P: Office: +886-2-22997898 E-mail: sales@dintek.com.tw W: www.dintek.com.tw

1201-04X43