

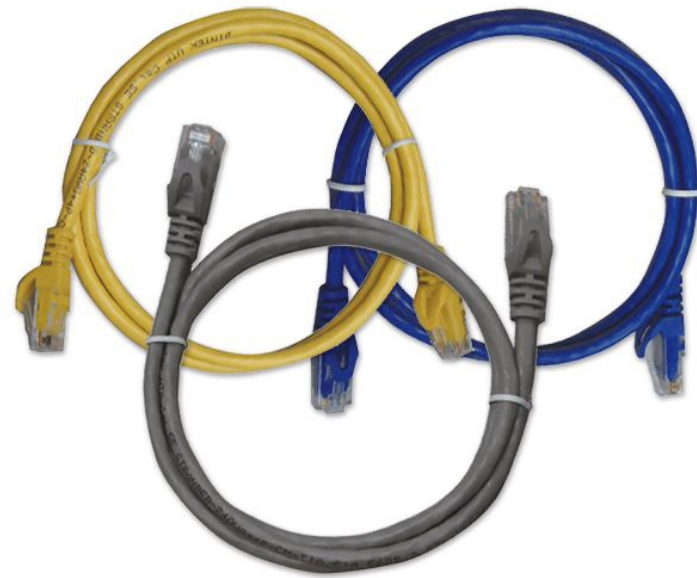
Publish Date : 28.07.2019 | Rev no: 01

PowerMAX 1mtr Cat.6 U/UTP Patch Cord - LSZH

DINTEK PowerMAX™ Category 6 LSZH Patch Cords are specifically designed to support high speed data networks for Gigabit applications, and are fully tested to meet ANSI/TIA Category 6 channel requirements.

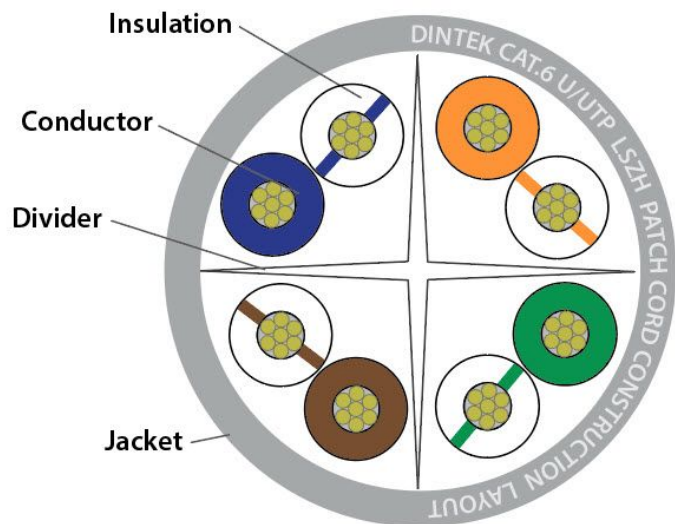
The patch cables are made from high quality shielded four pair 24AWG stranded wire.

DINTEK PowerMAX™ Cat.6 LSZH Patch Cords are pre-terminated with RJ45 plugs and feature anti-snap strain relief boots. DINTEK recommends the entire range of PowerMAX™ UTP products be used in a end-to-end system to maximize cabling performance.



Applications

- Patch panel to patch panel connections
- PC to information outlet connections
- Information outlet to telecommunications closet connections
- Equipment & DTE connections Voice; T1; ISDN
- 10BASE-T (IEEE 802.3)
- 16Mbps Token Ring (IEEE802.5)
- 100VG-AnyLAN (IEEE802.12)
- 100BASE-T Ethernet (IEEE802.3)
- 155/622Mbps 1.2/2.4 Gbps ATM
- 1000Mbps Gigabit Ethernet
- 550MHz Broadband Video



Features

- Molded boots prevent pin from bending and cables from kinking
- 24AWG stranded wire provides maximum flexibility
- Brilliant colors make management a snap
- Fully tested to meet ANSI/TIA-568-2.D category 6 requirement
- The various colors are available to meet TIA/EIA-606 standards
- The mechanical characteristics and transmission performance meet 16Mbps token Ring, 10Base-T, 100Base-T, 155Mbps, 622Mbps ATM, Gigabit-Ethernet and 1.2Gbps ATM requirements.

Standards Conformance

- ETL verified to ANSI/TIA-568-2.D specifications
- ISO/IEC11801 2nd edition
- ANSI/TIA-568-C.2
- CENELEC EN 50173
- LSZH Flame test as per IEC 60332-1
- RoHS-6 Compliant

Ordering Information

Product Number	Product Name	Jacket Type	Color	Length Qty
1201-04473	Cat.6 U/UTP Patch Cord	LSZH	Gray	1 m
1201-04474	Cat.6 U/UTP Patch Cord	LSZH	Blue	1 m
1201-04475	Cat.6 U/UTP Patch Cord	LSZH	Red	1 m
1201-04476	Cat.6 U/UTP Patch Cord	LSZH	Yellow	1 m
1201-04477	Cat.6 U/UTP Patch Cord	LSZH	Green	1 m

Technical Specifications

Cable Construction	
Conductor	
Material	Bare Copper
Wire Size	24AWG
Insulation	
Material	HDPE
Thickness	0.2mm
Diameter	1.0±0.05mm
Colors	Blue/White-Blue Orange/White-Orange Green/White-Green Brown/White-Brown
Jacket	
Material	LSZH, flame retardant CM grade
Thickness	Nom. 0.66 - 0.70mm
Diameter	5.6 ±0.2mm
Color	Gray Blue Yellow Red Green Orange Black Violet
Maximum Tensile Strength	1.05 kgf/mm ²
RJ45 Plug	
Plug Type	Un-shielded RJ45 plug Housing>polycarbonate
Contact Material	Copper alloy 50u" gold plated over nickel
Strength	20lbs. min
Durability	750 cycles min.
Wiring schemes	T568B (Standard) - T568A on request
Electrical	
Impedance	93.8Ω ± 15 Ω
Capacitance unbalance pair to ground	330pf/100m Max
D.C.R (Max.)	14.8 ohm/100m at 20°C
DC Insulation Resistance	500MΩ/100m min.
Resistance unbalance	3% MAX./100m

DINTEK Electronic Limited

5F., No.8, Ln. 97, Wugong Rd.
Xinzhuang Dist., New Taipei City 242
Taiwan (R.O.C.)

P: Office: +886-2-22997898 **E-mail:** sales@dintek.com.tw **W:** www.dintek.com.tw

1201-04X41